

EVOLVE[®]

True Definitive Care for BPH.



The future of BPH treatment has come to the office.

bio[®]
LITEC

www.biolitec.com

LIFE™

Laser Induced Flow Enhancement procedure for BPH treatment.

True Definitive Care for BPH

LIFE Laser Induced Flow Enhancement is much more than a laser system.

LIFE is a simple and effective process for bringing true definitive care to BPH.

The LIFE Procedure incorporates both our EVOLVE® Laser System and our patented side-fire fiber: FUSION™. The combined result is a minimally invasive procedure with enhanced patient benefits such as quick recovery, local anesthesia and minimal post-treatment side effects or discomfort.

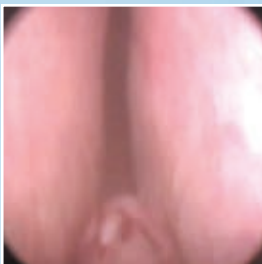
LIFE provides a better patient experience through a number of advanced features and benefits:

- *Minimal post-treatment discomfort or side effects*
- *Option of local anesthesia in an office setting*
- *Quick recovery*
- *Limited or no need for post-op catheterization*
- *No hospitalization post-op required*
- *Office visit co-pay versus hospital deductible*

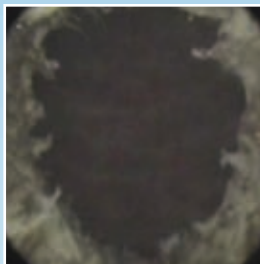
Low Risk of Complications:

- *Can greatly reduce the possibility of retrograde ejaculation*
- *In most cases, there is no impact on sexual performance or continence*
- *Wavelength is ideal for vaporization and hemostasis*

Clinical Result:



pre-operative

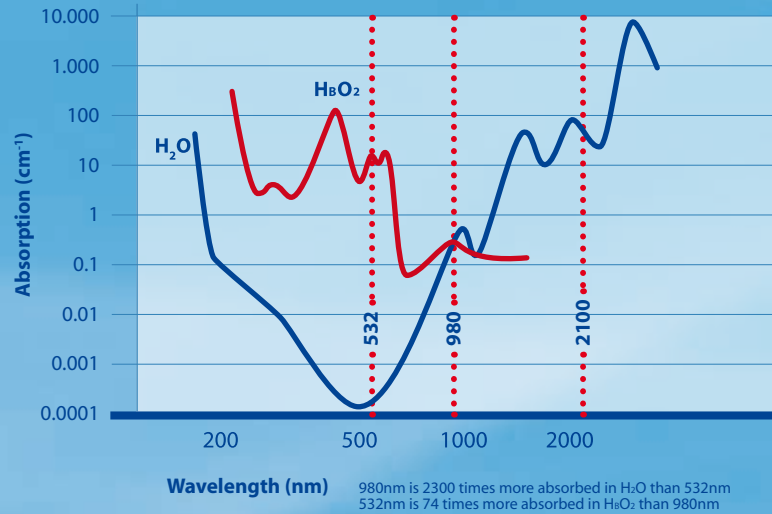


post-operative

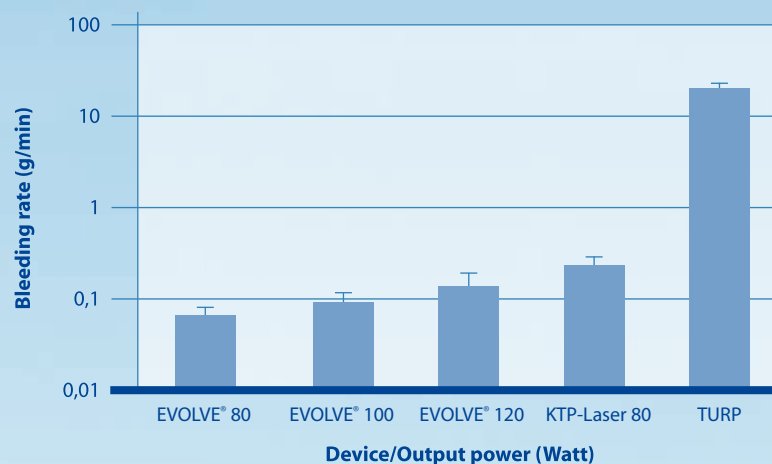
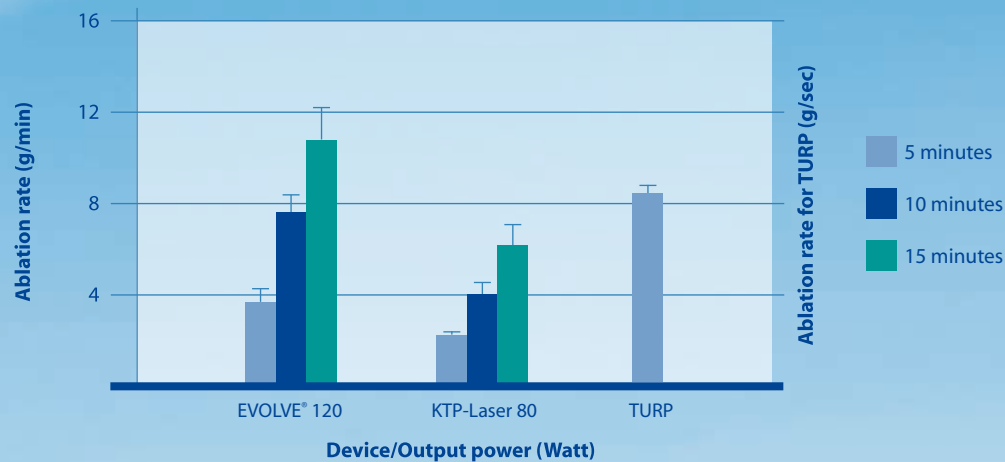
“The operation, performed with the EVOLVE 980nm laser, can be rightly considered a breakthrough in the treatment of BPH as it achieved an unobstruction comparable to TURP while preserving sexual performance and ensuring normal anterograde ejaculation.”

Source: R. Leonardi Manuscript Number: EURUROL-D-08-00245 SLV WITH DIODE LASER 980nm AND PRESERVATION OF ANTEROGRADE EJACULATION PERSONAL TECHNIQUE

Selective Laser Vaporization (SLV)



Ex-vivo Evaluation of EVOLVE®



EVOLVE[®]

A Complete Procedural System

EVOLVE[®] Laser System - FUSION[™] Fiber

The EVOLVE Laser is used to vaporize and remove the obstructing prostate tissue that causes the symptoms associated with BPH. The 980nm wavelength of the EVOLVE Laser combined with the FUSION Fiber precisely eliminates the obstruction while causing no damage to the surrounding tissue. This leads to a more rapid recovery with less post-op discomfort compared to traditional surgery.

Tissue Interaction

The 980nm wavelength of the EVOLVE Laser System provides the highest combined absorption in water and hemoglobin. Since the prostate contains a high percentage of water, the EVOLVE Laser vaporizes tissue effectively. Absorption of the laser energy by hemoglobin leads to excellent hemostasis combined with precise ablation of the obstructing tissue.

EVOLVE 150 Laser System

The World's Most Powerful Medical Laser System:

For unmatched performance in speed and effectiveness

Mobile Unit or Portable System:

Depending on the setup of your practice, you can choose between the portable laser system or a complete mobile unit with additional light, camera module and monitor

Extremely Quiet:

Noise is an unwanted distraction in endourological ORs, our EVOLVE Laser System allows you to work in a quiet environment

Automatic Fiber Type Recognition:

The maximum output is based on the connected fiber. The laser detects and protects the fiber type by maintaining secured output parameters (RFID technique)

Auto-Memory Function:

Operating the EVOLVE Laser System is further simplified by automatically storing the last parameter settings used, ensuring both operator and patient safety

Interdisciplinary Use:

Due to EVOLVE's small footprint and its light weight, the LIFE™ Procedure can easily be incorporated into a mixed-device/mixed-procedure environment within surgical centers

Excellent Visualization:

The wavelength of the EVOLVE diode laser is invisible to the human eye and does not impair your vision during a procedure. The resulting lack of distraction makes it easier to operate with precision in a stress-free environment

Minimal Maintenance Costs:

Thanks to the long life and trouble-free characteristics of biolitec's laser diode technology, high maintenance costs are things of the past



Specifications:

Laser type: diode laser	Wavelength: 980nm
Treatment mode: continuous-wave or pulsed	Pulse duration: 0.01 – 99.9 sec
Output: up to 150 Watts	Aiming beam: 635nm – 4mW
Cooling: air	Dimensions: 22Wx12D x 12H (in); 56W x 30D x 30H (cm)
Weight: 66.1 lbs (30 kg)	Power supply: 220 V / 110 V, 50/60 Hz

FUSION™

FUSION Fiber

Designed specifically with a patented fused cap and unique side-fire feature for soft tissue urological procedures, FUSION Fiber offers unsurpassed performance, reliability and convenience.

- Uniform 600 μm fiber with a 1.95 mm outside diameter enables maximum performance in conjunction with the EVOLVE Laser System
- Dual indicator lines provide easy visualization for precise targeting of the laser beam
- Special silica window protects the working tip
- Unique hand-positioning knob facilitates easy reference to beam direction

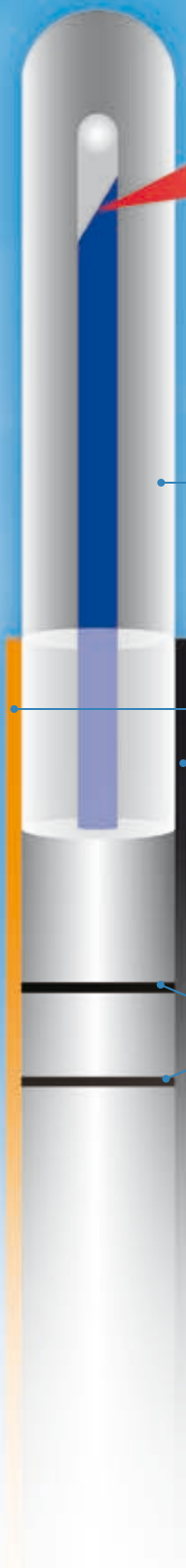
70° forward deflection for high ablation rates for vaporization of tissue.

Visible aiming beam for precise control of the laser beam.

Rugged construction.

A solid orange indicator line located 180° from the exit beam. A solid black indicator line located at the exit beam. Dual indicator lines allow for better positioning of the fiber.

Retraction indicator lines for scope safety.



Comparison of Laser Systems on the Urology Market

EVOLVE	KTP	Ho:YAG
Wavelength 980nm	Wavelength 532nm	Wavelength 2100nm
Highest combined absorption in water and hemoglobin	Selectively absorbed in hemoglobin	Selectively absorbed in water
Selective Light Vaporization (SLV) – perfect combination of contact vaporization and hemostasis	Non-contact vaporization of soft and vascular tissue. No other indications are possible.	Non-contact ablation through vapor bubbles
Excellent hemostasis ensures minimal post-operative bleeding and preservation of surrounding tissue for a quick recovery	Resulting heat induces a small coagulation zone	Moderate hemostasis requires post-operative catheterization and can lead to intra-operative bleeding Tissue removal is superficial, allows for precise cuts, but slow vaporization

The benefits of biolitec's EVOLVE® technology extend well beyond BPH treatment:			
Bladder Tumors	Bladder Neck Condyloma	Urethra Strictures	External Genital Lesions such as Condyloma



biolitec AG

Winzerlaer Straße 2 · D-07745 Jena, Germany
Phone: +49 36 41 50 85 50 · Fax: +49 36 41 50 85 99
E-Mail: info@biolitec.de · <http://www.biolitec.de>

biolitec Inc.

515 A Shaker Road · East Longmeadow, MA 01028, USA
Phone: +800 934 2377 · Fax: +1 413 525 0611
E-Mail: info@biolitec-us.com · <http://www.biolitec-us.com>

biolitec Italia SRL

Viale Monza 133 · 20123 Milano, Italy
Phone: +39 02 28 17 2 400 · Fax: +39 02 28 17 2 299
E-Mail: info@biolitec.it · <http://www.biolitec.com>

biolitec (M) Sdn. Bhd.

No. 18, Jalan PJS. 7/21 · Bandar Sunway · 46150 Petaling Jaya, Selangor D.E., Malaysia
Phone: +603 56 32 71 28 · Fax: +603 56 38 01 28
E-Mail: info@biolitec.com.my · <http://www.biolitec.com>

biolitec India Pvt. Ltd.

603/604, Carlton Towers, Airport Road · Bangalore-8, India
Phone: + 91 80 4148 2050
E-Mail: info@biolitec.com · <http://www.biolitec.com>

biolitec FZ LLC

B/P 49 Unit 306 · P.O. Box 505072 · Dubai Healthcare City · United Arab Emirates
Phone: +97 1507946118

biolitec, SIA

Kaniera iela 10a · Riga, LV-1063 · Latvia
Phone: + 371 53 43 646 · Fax: + 371 53 07 210
E-mail: info.lv@biolitec.com · <http://www.biolitec.com>

www.biolitec.com